

**Anti-p63 Antibody**  
**Catalog # ABO11364****Specification**

---

**Anti-p63 Antibody - Product Information**

Application	WB, IHC-P, ICC
Primary Accession	<a href="#">Q9H3D4</a>
Host	Rabbit
Reactivity	Human, Mouse, Rat
Clonality	Polyclonal
Format	Lyophilized

**Description**

Rabbit IgG polyclonal antibody for Tumor protein 63(TP63) detection. Tested with WB, IHC-P, ICC in Human;Mouse;Rat.

**Reconstitution**

Add 0.2ml of distilled water will yield a concentration of 500ug/ml.

**Anti-p63 Antibody - Additional Information**

**Gene ID** 8626

**Other Names**

Tumor protein 63, p63, Chronic ulcerative stomatitis protein, CUSP, Keratinocyte transcription factor KET, Transformation-related protein 63, TP63, Tumor protein p73-like, p73L, p40, p51, TP63, KET, P63, P73H, P73L, TP73L

**Calculated MW**

76785 MW KDa

**Application Details**

Immunocytochemistry , 0.5-1 µg/ml, Human, Mouse,  
Rat<br>Immunohistochemistry(Paraffin-embedded Section), 0.5-1 µg/ml, Human, Mouse, Rat, By  
Heat<br>Western blot, 0.1-0.5 µg/ml, Human, Rat, Mouse<br>

**Subcellular Localization**

Nucleus .

**Tissue Specificity**

Widely expressed, notably in heart, kidney, placenta, prostate, skeletal muscle, testis and thymus, although the precise isoform varies according to tissue type. Progenitor cell layers of skin, breast, eye and prostate express high levels of DeltaN-type isoforms. Isoform 10 is predominantly expressed in skin squamous cell carcinomas, but not in normal skin tissues. .

**Protein Name**

Tumor protein 63

**Contents**

Each vial contains 5mg BSA, 0.9mg NaCl, 0.2mg Na2HPO4, 0.05mg Thimerosal, 0.05mg NaN3.

**Immunogen**

A synthetic peptide corresponding to a sequence at the C-terminus of human p63(664-680aa DMDARRNKQQRIKEEGE), different from the related rat and mouse sequences by one amino acid.

**Purification**

Immunogen affinity purified.

**Cross Reactivity**

No cross reactivity with other proteins

**Storage**

**At -20°C for one year. After reconstitution, at 4°C for one month. It can also be aliquotted and stored frozen at -20°C for a longer time. Avoid repeated freezing and thawing.**

**Sequence Similarities**

Belongs to the p53 family.

**Anti-p63 Antibody - Protein Information****Name** TP63**Synonyms** KET, P63, P73H, P73L, TP73L**Function**

Acts as a sequence specific DNA binding transcriptional activator or repressor. The isoforms contain a varying set of transactivation and auto-regulating transactivation inhibiting domains thus showing an isoform specific activity. Isoform 2 activates RIPK4 transcription. May be required in conjunction with TP73/p73 for initiation of p53/TP53 dependent apoptosis in response to genotoxic insults and the presence of activated oncogenes. Involved in Notch signaling by probably inducing JAG1 and JAG2. Plays a role in the regulation of epithelial morphogenesis. The ratio of DeltaN-type and TA\*-type isoforms may govern the maintenance of epithelial stem cell compartments and regulate the initiation of epithelial stratification from the undifferentiated embryonal ectoderm. Required for limb formation from the apical ectodermal ridge. Activates transcription of the p21 promoter.

**Cellular Location**

Nucleus

**Tissue Location**

Widely expressed, notably in heart, kidney, placenta, prostate, skeletal muscle, testis and thymus, although the precise isoform varies according to tissue type. Progenitor cell layers of skin, breast, eye and prostate express high levels of DeltaN-type isoforms. Isoform 10 is predominantly expressed in skin squamous cell carcinomas, but not in normal skin tissues

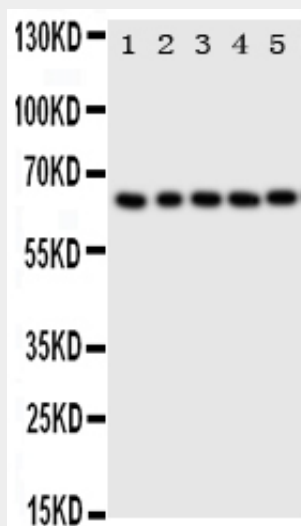
**Anti-p63 Antibody - Protocols**

Provided below are standard protocols that you may find useful for product applications.

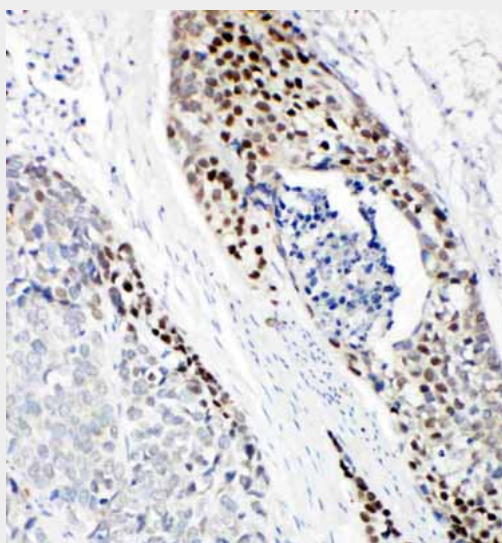
- [Western Blot](#)
- [Blocking Peptides](#)
- [Dot Blot](#)
- [Immunohistochemistry](#)

- [Immunofluorescence](#)
- [Immunoprecipitation](#)
- [Flow Cytometry](#)
- [Cell Culture](#)

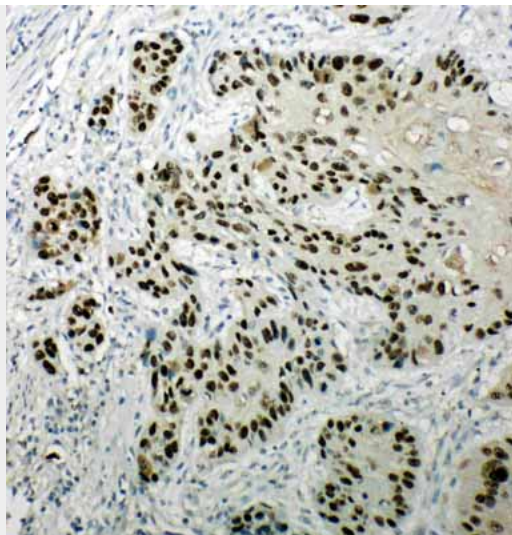
### Anti-p63 Antibody - Images



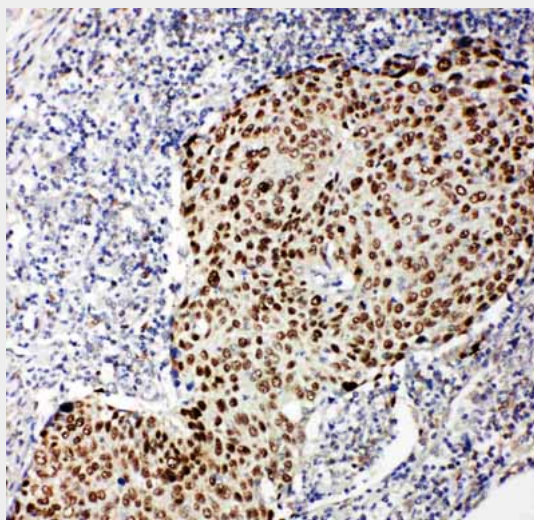
Anti-p63 antibody, ABO11364, Western blotting  
Lane 1: HELA Cell Lysate  
Lane 2: SMMC Cell Lysate  
Lane 3: COLO320 Cell Lysate  
Lane 4: A549 Cell Lysate  
Lane 5: SGC Cell Lysate



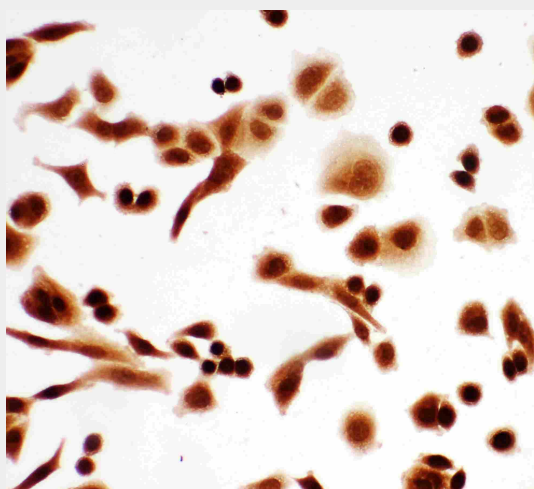
Anti-p63 antibody, ABO11364, IHC(P)  
IHC(P): Human Esophageal Squamous Cell Carcinoma Tissue



Anti-p63 antibody, ABO11364, IHC(P)IHC(P): Human Esophageal Squamous Cell Carcinoma Tissue



Anti-p63 antibody, ABO11364, IHC(P)IHC(P): Human Lung Cancer Tissue



Anti-p63 antibody, ABO11364, ICCICC: A549 Cell

#### **Anti-p63 Antibody - Background**

TP63(Tumor Protein p63), also known as KET, is a protein that in humans is encoded by the TP63 gene. Yang et al.(1998) described the cloning of tumor protein p63, which shows strong homology to the tumor suppressor p53 and the p53-related protein p73. By fluorescence in situ hybridization, Yang et al.(1998) localized the human TP63 gene to chromosome 3q27-q29. Hibi et al.(2000) stated that p53 homologs known variously as p40, p51, p63, and p73L(Trink et al., 1998, Yang et al., 1998, Osada et al., 1998, Senoo et al., 1998) are isoforms of the same gene, which Hibi et al.(2000) referred to as AIS for amplified in squamous cell carcinoma.